

Standard Ins Co

Group Affiliation: Meiji Yasuda US Life Group
Address: 1100 S.W. Sixth Avenue
 Portland OR 97204-1093
Phone: 971-321-7000

Domicile: OR
NAIC Number: 69019
Year Established: 1906
Company Type: Stock

Ratings

A.M. Best Company(Best's Rating, 15 ratings) A (3)
 Standard & Poor's(Fin. Strength, 20 ratings) A+ (5)
 Moody's(Fin. Strength, 21 ratings) A1 (5)
 Weiss(Safety Rating, 16 ratings) B+ (4)

Assets & Liabilities

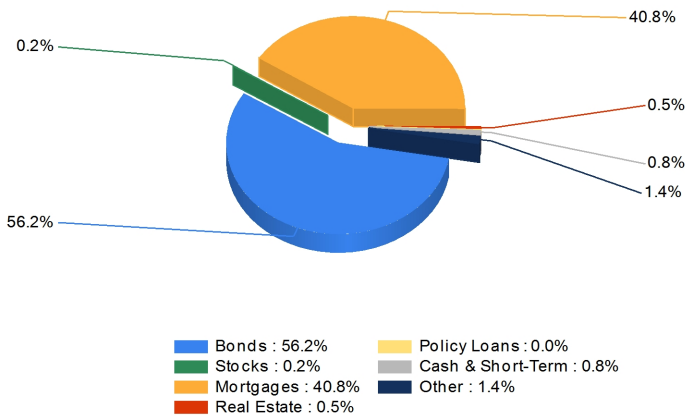
Total Admitted Assets 23,862,642
 Total Liabilities 22,568,661
 Separate Accounts 7,442,322
 Total Surplus & AVR 1,421,728
 As % of General Account Assets 8.7%

Invested Asset Distribution

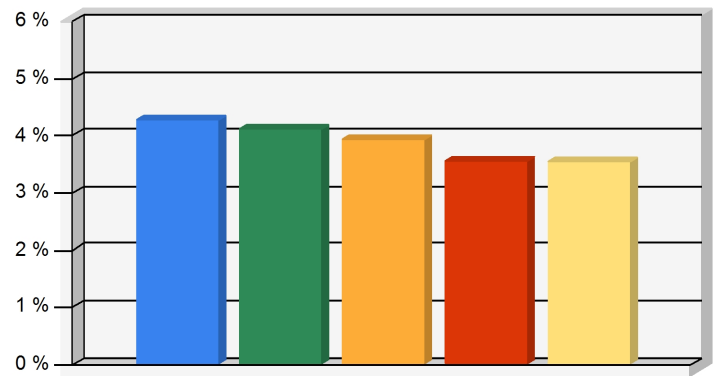
Total Invested Assets 15,766,304

5 Year Investment Yields

5 Year Average 3.87%



Distribution of the invested assets



Net yield on mean invested assets

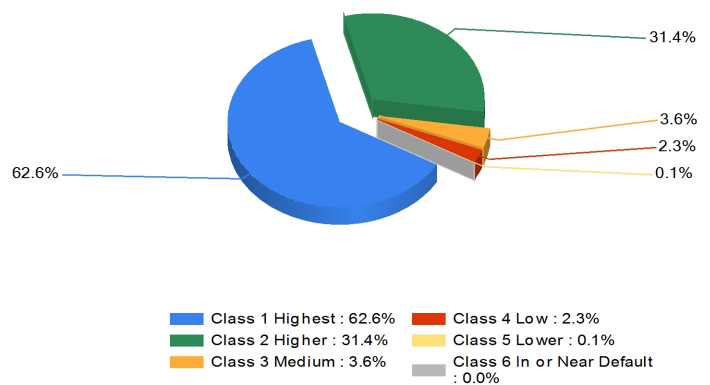
Non-Performing Assets

Bonds In or Near Default 0.0%
 Problem Mortgages 0.2%
 Real Estate Acquired by Foreclosure 0.0%
 Total Non-Performing Assets/Surplus & AVR 0.2%
 As a Percent of Invested Assets 0.0%

Income & Earnings

Total Income 5,268,008
 Net Premiums Written 4,459,061
 Earnings Before Dividends and Taxes 208,804
 Net Operating Earnings 198,659

Bond Quality



Distribution of bond classes

A Best's Financial Strength Rating opinion addresses the relative ability of an insurer to meet its ongoing insurance obligations. It is not a warranty of a company's financial strength and ability to meet its obligations to policyholders. View our Important Notice: Best's Credit Ratings for a disclaimer notice and complete details at <http://www.ambest.com/ratings/notice>.

Data for Year-End 2018 from the life insurance companies' statutory annual statements. All dollar amounts are in thousands. All ratings shown are current as of March 16, 2020.

Presented by: Daniel J Adams, CEG Life Insurance Services, 611 4th Avenue, Suite A, Kirkland, WA 98033 Phone: 425-947-5288 Fax: 877-269-2157 Email: dj@ceglife.com