

# American National Ins Co

**Group Affiliation:** American National Group  
**Address:** One Moody Plaza 17th Floor  
 Galveston TX 77550-7999  
**Phone:** 409-763-4661

**Domicile:** TX  
**NAIC Number:** 60739  
**Year Established:** 1905  
**Company Type:** Stock

## Ratings

A.M. Best Company(Best's Rating, 15 ratings) A (3)  
 Standard & Poor's(Fin. Strength, 20 ratings) A (6)  
 Weiss(Safety Rating, 16 ratings) B (5)

## Assets & Liabilities

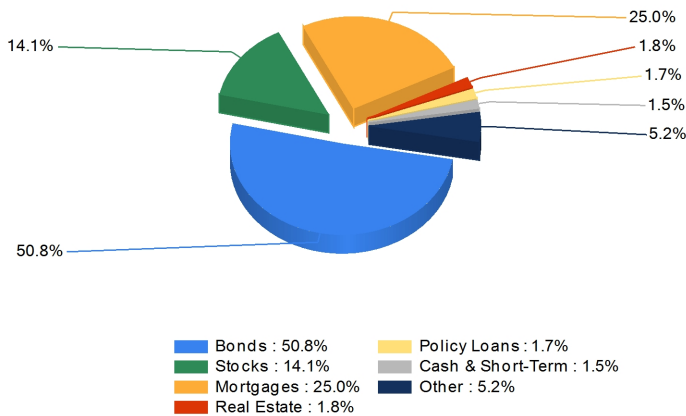
Total Admitted Assets 20,467,546  
 Total Liabilities 17,304,738  
 Separate Accounts 918,369  
 Total Surplus & AVR 3,669,020  
 As % of General Account Assets 18.8%

## Invested Asset Distribution

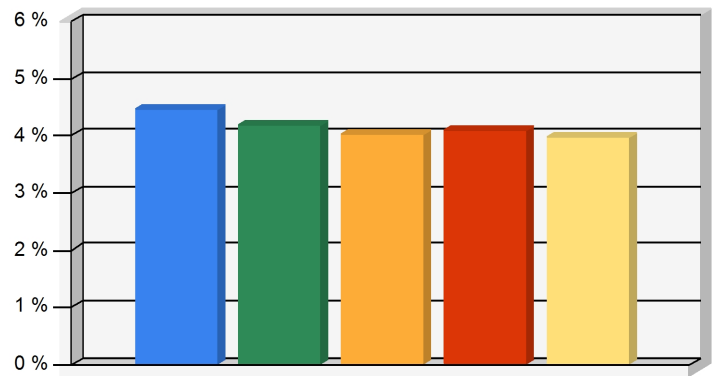
Total Invested Assets 19,121,217

## 5 Year Investment Yields

5 Year Average 4.13%



Distribution of the invested assets



Net yield on mean invested assets

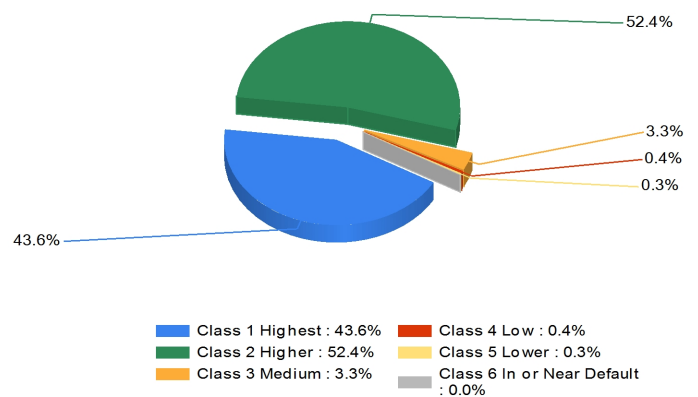
## Non-Performing Assets

Bonds In or Near Default 0.0%  
 Problem Mortgages 0.2%  
 Real Estate Acquired by Foreclosure 1.0%  
 Total Non-Performing Assets/Surplus & AVR 1.2%  
 As a Percent of Invested Assets 0.2%

## Income & Earnings

Total Income 2,914,791  
 Net Premiums Written 1,949,886  
 Earnings Before Dividends and Taxes 22,749  
 Net Operating Earnings 18,587

## Bond Quality



Distribution of bond classes

A Best's Financial Strength Rating opinion addresses the relative ability of an insurer to meet its ongoing insurance obligations. It is not a warranty of a company's financial strength and ability to meet its obligations to policyholders. View our Important Notice: Best's Credit Ratings for a disclaimer notice and complete details at <http://www.ambest.com/ratings/notice>.

Data for Year-End 2018 from the life insurance companies' statutory annual statements. All dollar amounts are in thousands. All ratings shown are current as of March 16, 2020.

Presented by: Daniel J Adams, CEG Life Insurance Services, 611 4th Avenue, Suite A, Kirkland, WA 98033 Phone: 425-947-5288 Fax: 877-269-2157 Email: [dj@ceglife.com](mailto:dj@ceglife.com)