

AXA Equitable Life Ins Co

Group Affiliation: AXA Equitable Group
Address: 525 Washington Blvd.
 Jersey City NJ 07310
Phone: 212-554-1234

Domicile: NY
NAIC Number: 62944
Year Established: 1859
Company Type: Stock

Ratings

A.M. Best Company(Best's Rating, 15 ratings) A (3)
 Standard & Poor's(Fin. Strength, 20 ratings) A+ (5)
 Moody's(Fin. Strength, 21 ratings) A2 (6)
 Weiss(Safety Rating, 16 ratings) B+ (4)

Assets & Liabilities

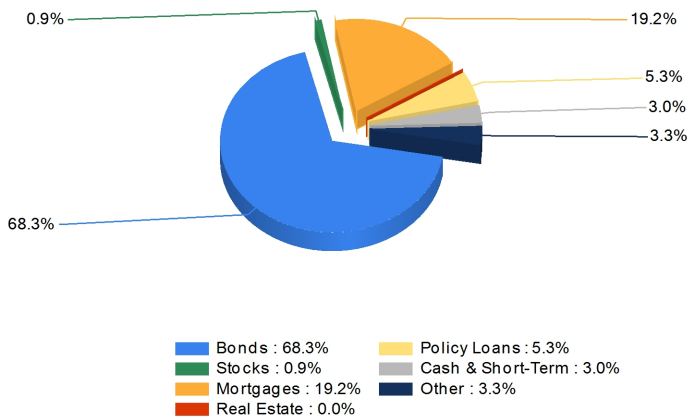
Total Admitted Assets 190,005,188
 Total Liabilities 182,430,086
 Separate Accounts 125,820,954
 Total Surplus & AVR 7,935,197
 As % of General Account Assets 12.4%

Invested Asset Distribution

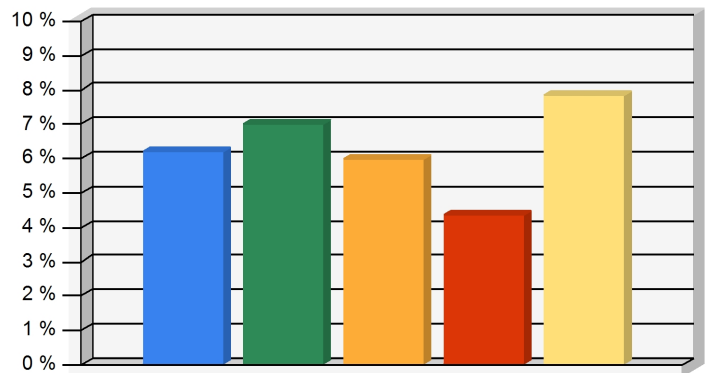
Total Invested Assets 61,282,656

5 Year Investment Yields

5 Year Average 6.25%



Distribution of the invested assets

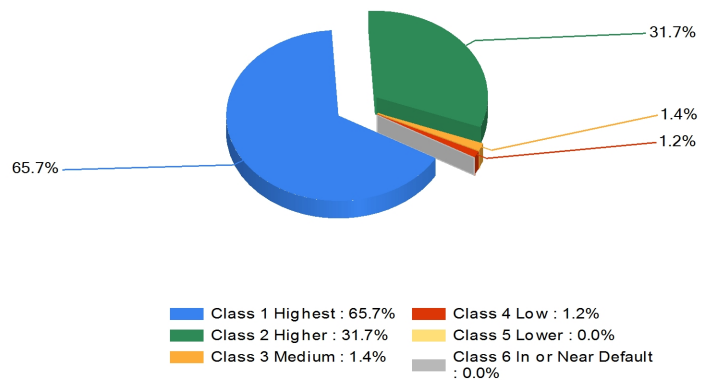


Net yield on mean invested assets

Non-Performing Assets

Bonds In or Near Default 0.0%
 Problem Mortgages 0.6%
 Real Estate Acquired by Foreclosure 0.0%
 Total Non-Performing Assets/Surplus & AVR 0.7%
 As a Percent of Invested Assets 0.1%

Bond Quality



Distribution of bond classes

Income & Earnings

Total Income 18,838,692
 Net Premiums Written 12,667,792
 Earnings Before Dividends and Taxes 2,852,701
 Net Operating Earnings 2,876,723

A Best's Financial Strength Rating opinion addresses the relative ability of an insurer to meet its ongoing insurance obligations. It is not a warranty of a company's financial strength and ability to meet its obligations to policyholders. View our Important Notice: Best's Credit Ratings for a disclaimer notice and complete details at <http://www.ambest.com/ratings/notice>.

Data for Year-End 2018 from the life insurance companies' statutory annual statements. All dollar amounts are in thousands. All ratings shown are current as of March 16, 2020.

Presented by: Daniel J Adams, CEG Life Insurance Services, 611 4th Avenue, Suite A, Kirkland, WA 98033 Phone: 425-947-5288 Fax: 877-269-2157 Email: dj@ceglife.com